



Quality Since 1917

A DIVISION OF



FOSTORIA INDUSTRIES, INC.

1200 North Main Street

Fostoria, OH 44830

Phone: 800-495-4525

Fax: 419-435-0842

www.fostoriaindustries.com



VHC-15

VARIABLE HEAT CONTROLLER

For control of one (1) 1600W,
208/240V A.C. infrared quartz lamp or
a constant-resistance load of 15A.

WARNING

IMPORTANT SAFETY INFORMATION INSIDE



- Serious injury or death possible
- Read, understand, and follow all safety information and instructions in this manual before using or servicing this product.
- Retain these instructions for future reference.

CONTENTS

Specifications	Page 2
Wiring	Page 2
Limited Warranty	Page 3



If you have questions about the product you have purchased or would like to leave us feedback, please contact us via our website www.fostoriaindustries.com or by calling 1-800-495-4525.

SPECIFICATIONS

- 208/240 V A.C. single-phase “In-Line” controller
- Built-in On/Off switch with surface plate included
- Designed for 2”x 4” electrical wall box mounting (not supplied)
- **Will operate:**
 - o One (1) 1600W quartz lamp or
 - o Up to two (2) quartz tubes (rated under 15Amps total).

CAUTION

The initial current inrush of quartz lamps is very high; as much as 10 – 15 times the steady-state current. Operating the VHC-15 with more than one 1600W quartz lamp will damage the control. This concern is not applicable to quartz tubes or other constant-resistance elements.

! WARNING



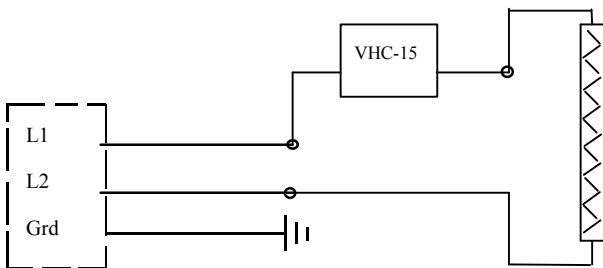
ELECTRICAL SHOCK HAZARD

- Serious injury or death may occur.
- Disconnect from electrical supply before installing or servicing this product.
- Read, understand, and follow all wiring and installation instructions below.



WIRING

For field wiring, refer to the Installation manual included with your heater and wire the VHC-15 in-line with the ungrounded, hot leg of the power supply (see diagram below) with wire nuts.



Make certain the power source conforms to specifications on the heater label.

Do not depend on the On/Off switch as the sole means of disconnecting power when installing or servicing this product. Always open the safety switch and lock it open.

All wiring must be performed by a licensed electrician.

Use only copper wire to power these heaters.

Never connect the green or green-yellow wire to a live or “hot” conductor.

LIMITED WARRANTY

FOSTORIA INDUSTRIES, INC. – 1200 N. Main St., Fostoria, Ohio 44830 - (419) 435-9201

The warranty herein set forth is in lieu of all other warranties expressed or implied.

Fostoria Industries, Inc. of Fostoria, Ohio 44830, warrants its products to the owner against defects in material and workmanship for a twelve (12) month period under normal use and service following date of manufacture or installation when proof of such is provided to seller.

This Warranty requires that the owner, or his agent, install the equipment in accordance with the National Electrical Code, any other applicable heating or electrical codes and the manufacturer's installation instructions. It further requires that he perform reasonable and necessary maintenance on the unit. The company is not liable for abuse or misuse of product as may be finally determined by the company.

The obligation of Fostoria Industries, Inc. under the terms of this warranty, shall be to supply a new part, repair of defective part, or a refund, at the company's option with no cost to owner for the new or repaired part. Such parts are to be returned to the factory, or such other location as the company may designate. This warranty does not obligate Fostoria Industries, Inc. to bear the cost of labor in replacing any assembly, unit or component part thereof, nor does the company assume any liability for secondary charges, expenses for installing or removal, or any other consequential losses. The company's maximum liability shall not in any case exceed the list price for the product claimed to be defective.

The warranty shall not apply to any product or parts of products which have been repaired or altered outside of Seller's factory in any manner. Warranty is void on products that have been determined to have been subjected to misuse, negligence or accident or which have been used in a manner contrary to Seller's instructions.